







**Retail & Display**




# Blok Wall

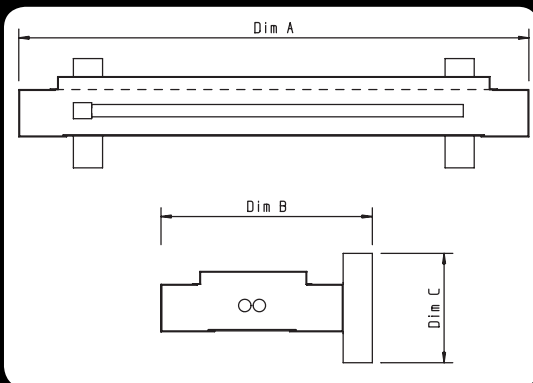
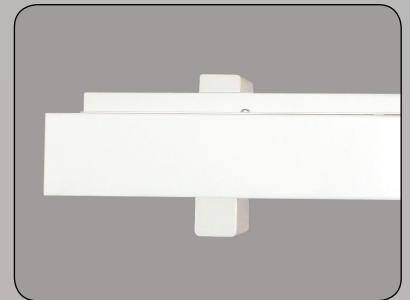
IP20 CE

The Blok Wall Is A Robust High Quality Direct/Indirect Fitting With The Flexibility Of Numerous Configurations And Directional Lighting That Can Suit Any Application.

-  Body constructed from zintec steel powder coated white as standard.
-  Polished aluminium louvre, prismatic panel or Silver paracube.
-  Supplied as standard with leading brand high frequency control gear.
-  Up/downlight distribution as standard..

**Available options ....**

-  Energy saving control gear options including analogue dimming, digital dimming, movement sensing, daylight sensing.
-  Uplight or downlight only effects.
-  Many other ral colour finishes available.



Order Code	Dim A	Dim B	Dim C	Lamps	Wattage
BLW140	700mm	290mm	150mm	1	40w PLL
BLW240	700mm	290mm	150mm	2	40w PLL
BLW155	700mm	290mm	150mm	1	55w PLL
BLW255	700mm	290mm	150mm	2	55w PLL

Control Suffix	
DA	DALI Dimmable
DSI	DSI Dimmable
TD	Touch Dimmable
AD	1-10v Analogue Dimmable
EL	3 Hour Integral Emergency
ELST	Self Test Emergency 3 Hour

Controller Suffix	
C2	Polished Louvre
TPA	TPA Prismatic Diffuser
OP	Smooth Opal Diffuser
SP	Silver Paracube

Body Style Suffix	
SB	Solid Back (no upright)